

ADAPTABILITY IS OUR STRENGTH

Providing food, resources and leadership



Our Strategy

Three Pillars

All Operation Food Search initiatives support our strategy to alleviate food insecurity and address the root causes of hunger.

Meet the Immediate Need



AGENCY DISTRIBUTION

We provide food to nearly 200 partner agencies working to address the needs in their communities.



OPERATION BACKPACK

Weekly sacks of kid-friendly food help students get through the weekend—when school meals are not available.



OUT-OF-SCHOOL MEALS

Our Summer Meals and Afterschool ReFuel programs provide vital nutrition to children when school is out.

Build Nutrition IQ



NUTRITION EDUCATION

OFS empowers individuals and the community with skills, knowledge and confidence to prepare healthy, affordable meals at home.



OPERATION CHEF

Courses that teach culinary skills weave nutrition education into every recipe, discussion and hands-on activity.



DEMONSTRATIONS

On- and off-site demonstrations for groups and organizations teach how to cook nutritious meals at home and on a budget.

Champion Change



POLICY

We work with lawmakers and stakeholders to advance public and institutional policies that help families put nutritious food on the table.



ADVOCACY

We educate, train and empower people to engage in the policy-making process to ensure that all voices are represented.



INNOVATION PROGRAMS

Our innovative solutions address the root causes of hunger to improve the overall health of individuals and communities.

Our Leadership



Kristen V. Wild



Lisa Pelikan

Our fiscal year began in October 2019 with an event that foreshadowed the tumultuous times to come: a water main break in our offices caused a Category 3 flood, displacing many OFS teams for many weeks. But our staff responded with flexibility and good cheer, ensuring that the 200,000 people we serve each month continued to receive the nutrition and programs they rely on. Adapting to the unexpected challenge turned out to be a dress rehearsal for 2020, when, like so many other nonprofits, we'd be put to an even greater test.

The COVID-19 pandemic forced us to break out of our standard problem-solving approaches. Supply-chain disruptions required us to identify new sources of food. Our staff took on the additional work of packing thousands of boxes of food, normally handled by volunteers. We found new ways to connect with the families we served to prevent gaps in crucial resources. And we expanded our reach to include those who found themselves facing food insecurity for the very first time. These adaptations resulted in millions of additional meals for children and families in the bistate region.

The changes created additional benefits: we restructured our warehouse and modified distribution, making the process safer, faster and more efficient. Virtual programming enabled us to tap into new beneficiaries for our nutrition education services. And we expanded our community of support to include an even greater number of caring people who believe in our work and understand that hunger does not discriminate.

An organization is not adaptable; its people are. We were well-positioned to respond to this crisis with flexibility and creativity thanks to the dedicated people who have shaped and supported OFS for 40 years: selfless volunteers, generous donors, outstanding partners and a staff committed to the mission of healing hunger. At the center, however, are the most adaptable, resilient people of all: those who, in the midst of hardship, face each day with renewed hope and resolve. They are why we do this work and why we remain committed to our vision for all children and families in our community to have the nutrition, food and skills to live healthy lives.

Kristen V. Wild, Executive Director

Lisa Pelikan, Board Chair

Board of Directors

Officers

Chair:
Lisa Pelikan
Edward Jones

Vice Chair:
Alan Schultz
Bayer

Treasurer:
Amy Altholz
RubinBrown

Secretary:
Julie Hoff
Core & Main

Members

Dr. Kelvin Adams
St. Louis Public Schools

Erin Brooks
Bryan Cave Leighton
Paisner LLP

Laura Bryant
Formerly Enterprise
Holdings

Nik Brym
GardaWorld

Ryan Cuba
Schnuck Markets, Inc.

Jim Goebel
SoTel Systems, LLC

Skip Spielberg
Universal Leathers
Worldwide

Steve Spratt
Ascension Health

Jessica Stephan
Bunge

Rick Stevens
Christian Hospital

Friends Board

Officers

Chair:
Amanda Ruby
Bayer

Vice Chair:
Katie Hebson
AIG

Secretary:
Shelby Akos
Fox Sports-Midwest

VP of Membership:
Barrett Feltmeier
UniGroup

Members

Alejandra Berra
Commerce Bank

Sean Berry
Nidec Corporation

Tess Coyman
Select Specialty
Hospital

Kelly Cubellis
Wells Fargo

Julie Feltmeier
Enterprise Holdings

Madeleine Garbo
Ernst & Young

Suzanne Hart
Bryan Cave Leighton
Paisner LLP

Dr. Fredrica Hendrix
Brighter Vision Psy-
chological Services

Katie Mueller
BJC HealthCare

Delaney O'Donnell
Smile Brilliant

Andrew Rapp
UMB Bank

Alex Rich
KMOX

Austin Schultz
GadellNet

Cole Silverman
SSM Health
Rehabilitation Hospital

Mitch Slattery
Edward Jones

Mark Taylor
Centene Corporation

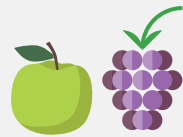
Scott Whitehill
Gallagher

Our Impact

October 2019–September 2020

\$31 Million

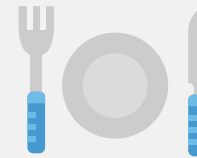
worth of food was distributed.



3.89 million lbs. of produce were distributed.

432,100

meals were funded using CARES Act funds.



24,000

family meal kits went to food-insecure families.



We worked with nearly

200

Community Food Partner Agencies in Missouri and Illinois.



OFS serves

27

counties in Missouri and Illinois and the city of St. Louis.



85,000

meals were provided to families through Emergency Food Packs.

We received

18,439

queries on our Hunger Hotline, text line and Find Food map.



\$1 Million

worth of food was collected from food and fund drives.



2,640

people were empowered by Nutrition Education programs.



11,201

viewers tuned in to “Cooking with Carmen.”



2,615

lbs. of produce were rescued from local farms.



KIDS' MEALS

More than

1.75 Million

meals were provided to kids.



More than

10,000

kids were served by Operation Backpack.



40,323

after-school meals were served.

More than

541,000

meals were served through the Summer Food Service Program.



Lunch participation at Normandy High School saw an initial increase from 45%-50% to about **90%**, and school breakfast participation tripled.*

*August-December 2019

FRESH Rx

Food Is Medicine Programs for Pregnant Women, Children and Families

107 pregnant moms participated in Fresh Rx: Nourishing Healthy Starts.



75 healthy babies were born during the pilot phase of our program*.

90% of newborns were full term.

An estimated

\$190,000

was saved in health-care costs associated with premature births.



In the first 18 months of the Fresh Rx: Prescribing Healthy Futures program, OFS worked with **22 families** and provided **450 meal kits**, financial relief and other supportive services.



*September 2018-September 2020

Our Impact

Program Snapshot: A Look at Some of Our Work From October 2019 to March 2020

Operation CHEF

In early 2020, OFS launched its signature nutrition-focused, hands-on cooking course titled Operation CHEF: Building Culinary Habits to Empower Families.

With the generous support of donors and partners like Area Resources for Community Human Services (ARCHS), students ages 8 through 12 were able to take part in this fun, educational after-school program until it was put on hold due to the COVID-19 pandemic. OFS is currently developing a virtual curriculum with a targeted launch of first-quarter 2021.



Grocery Store Tours

OFS's Cooking Matters at the Store® includes virtual grocery store tours to demonstrate how to make healthy, affordable shopping choices.

OFS's free Tour Event Days—offering guided tours of supermarket produce, bakery, meat and dairy departments—also became virtual as did the live cooking demonstrations that teach participants to prepare and cook nutritious meals at home.

The program was transitioned to a virtual model in March due to the pandemic.



After-school Meals

Afterschool ReFuel provides much-needed nutrition during the school year, as well as during school breaks—when meals are not available. The free program is offered at convenient locations across the community, including St. Louis County Library and St. Louis Public Library branches. These nutritious Super Snacks—which include a fruit, vegetable, protein, dairy and whole grain—help kids and teens stay focused and finish the day strong. Fun activities and cooking demonstrations for kids and families are also included when possible.

More than 40,000 meals were served in the first six months of the fiscal year. COVID-19 then required a shift to drive-through meal distribution.



Nutrition Ambassadors

In partnership with the Normandy Schools Collaborative, OFS launched a Nutrition Ambassador program that aimed to inspire a younger generation of food advocates. Interested students and faculty attended a six-week training course led by an OFS nutrition educator and a registered dietitian. The goal was to prepare them to provide recipe demonstrations, taste tests and nutrition education courses in the community. Twelve OFS Nutrition Ambassadors graduated in our spring 2020 cohort, and eight continued at-home training during the summer. Since completing the course, the ambassadors reported that they have, on average, doubled their daily intake of fresh fruit, increased the variety of foods they eat, and doubled the amount of time they spend in moderate physical activity each week.



Our Impact

EMERGENCY RESPONSE March–September 2020

COVID-19 Challenges



Schools closed due to COVID-19, leaving kids without access to school-provided meals.



As distribution chains were interrupted, access to food became more difficult.



Regulations regarding food assistance changed rapidly.



Millions in our service area filed for unemployment, and food insecurity increased.



Local governments and businesses canceled in-person events.

OFS Response

Our department of Child & Family Nutrition worked with school districts, superintendents and community organizations to get meals to kids, both as part of the schools' ongoing meal service and as a supplement to the food being provided by the districts.

OFS worked with restaurants and farmers to rescue food that would have otherwise been wasted and distributed it to the people who needed it most.

Our Policy and Advocacy team analyzed the Families First Coronavirus Response Act to determine the impact on education, the Supplemental Nutrition Assistance Program (SNAP) and the Special Supplemental Nutrition Program for Women, Infants, and Children (WIC) in Missouri.

OFS joined the Regional Response Team, coordinating with other leaders to address the needs of at-risk populations, low-income communities, and first responders and other essential workers.

When funding and food donations decreased as events were canceled, we started creating new partnerships, reaching out to companies to source food to be donated and shipped to our warehouse.

Food insecurity in Missouri has increased by **23%** in Missouri since the start of the pandemic.

1 in 4

children is currently at risk of hunger.

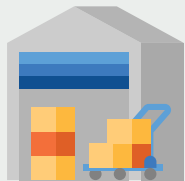


We increased our response to provide:

- ▶ Free Grab-and-Go meals to all children ages 18 and younger
- ▶ Emergency food packs for the families of those children
- ▶ Fresh produce boxes to food insecure families



OFS distributed more than **\$2.4M of food** from the USDA Farmers to Families Food Boxes program.



Our warehouse team loaded **thousands of boxes of food** onto trucks for distribution by our partners (libraries, schools, community centers), which used drive-through and walk-up models to maintain safety.



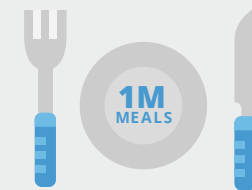
OFS developed Family Resources Flyers with local and statewide information about available resources and extended SNAP (food stamp) and WIC benefits.



4,085 visits to Child Meal Map

Our digital team created an interactive map for our website of **600 locations where free child meals are available**, including bus routes, libraries and community sites.

Beyond our regular food distribution helping **200,000** people per month, we provided an additional **1 million** meals to the community from March 30 to September 30.



Our Impact

EMERGENCY RESPONSE March–September 2020

More Ways We Responded to Uncertainty



Pantry Service Modifications

Many of our partner agencies (pantries and shelters) shifted to drive-through service and scheduled appointments to limit the number of clients being served at one time.



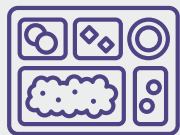
Warehouse Safety Enhancement

OFS worked to continuously improve safety measures, instituting new procedures to reduce contact when our agency partners picked up food from our warehouse.



Service to Pregnant Women and Their Families

Our Fresh Rx program continued to safely distribute food to pregnant women and their families to improve birth outcomes.



Flexibility as School Policies Changed

OFS monitored the rapidly changing policies that established when and how children could access meals, wherever learning was taking place.

"We are very impressed with the way OFS is handing out food now. The boxes of fresh vegetables and fruit are so perfect, everything is so fresh, and there is such a large variety. We are so grateful and blessed to be able to hand this out to our guests. And being able to return what we can't use was a great idea. We haven't had to return very much because there's been such a good food choice. Thank you so much."

—A satisfied OFS Community Food Partner

OFS Created a Healthier Warehouse Distribution Process.

The COVID-19 crisis called on us to revisit a revisiting of our food safety and social-distancing protocols. The result was dramatic, highly desirable improvements in the appearance and freshness of the food we distribute.

Prior to the pandemic, representatives of our partner food pantries entered the OFS warehouse to first receive preloaded dry goods carts and sort and gather refrigerated fresh food and bread items. Today, as part of our new, streamlined distribution process, OFS staff sort and pack food boxes with a standardized mix of fresh produce, dairy and bread.

"This transformation is a perfect example of how rethinking key processes can enhance the personal safety of OFS and partner staff members while benefiting those whom we serve. Our goal is for our partners and the families we serve to receive the freshest, highest-quality food available, and our new distribution process goes a long way to support that goal."

— Kristen Wild, OFS Executive Director



Creative Contributions

EMERGENCY RESPONSE March–September 2020

The OFS Community Found Unique Ways to Help During the Pandemic.



Ultramarathon in Forest Park

Tim Burke, a 51-year-old marathoner, ran 100 miles through Forest Park to benefit OFS. His 24-hour, half-road/half-path run raised more than \$35,000 through his GoFundMe page.



Sawyer's Sixth Birthday

A car parade helped celebrate Sawyer's sixth birthday. Instead of bringing presents, Sawyer asked that everyone donate to Operation Food Search. The youngest among us are often the most thoughtful and selfless. Thank you, Sawyer!



STL Mask Project by Ladue Students

An industrious group of St. Louis teens sold face masks to raise money for Operation Food Search, donating \$13,600 to help children and families struggling with food insecurity.

Drive-Through Entrepreneurship

To raise money for kids in need of food, three helpful siblings ages 3, 5 and 7 sold espresso drinks in their driveway one Sunday morning, raising \$218 for the Parkway Food Pantry and Operation Food Search. Their mother joked, "Maybe instead of homeschooling them, we'll teach them to run a small business!"



Front Porch Benefit Concert

Singer and musician Jim Ford played live on Facebook every Saturday, holding a concert on his front porch to benefit OFS. "My singing partner, Steve, and I met at a school and we both taught for many years," Jim said. "It breaks our hearts to see so many children without access to school lunch programs, so we're urging folks with extra funds to help our children get fed."



Creative Partnerships

Partner Agencies Adapt to the Crisis

Leveraging creativity and hard work, most pantry partners don't miss a beat.

Despite being run mostly by volunteers in high-risk groups for infection, more than 85% of our Community Food Partner Agencies remained open from February, when the pandemic hit, through October 2020.

Grace United Methodist Church's pantry in the Central West End, for example, changed its model of service during the shelter-in-place restrictions. "Normally, those we serve come into our pantry and walk through to choose food and clothing," said Co-Director Madonna Durham. "But because coming inside was no longer safe, we started putting food in bags for them and then let them have a choice of some items on tables outside."

The pantry marked spots for clients to wait in line on the asphalt and instituted a mask requirement. According to Durham, the number of families they served each week from February through October increased from 40 to 70 at the height of the pandemic.



OFS Adopts Gleaning

OFS rescues farm-fresh produce.

Thanks to a new collaboration with the Missouri Coalition for the Environment and local farmers, gleaning is now an active OFS program in the greater St. Louis area. Gleaning involves rescuing fresh food that would otherwise be wasted or unharvested at farms. Produce is gathered in the fields or picked up after the harvest and then quickly distributed to food-insecure individuals and families in the region.



Maximizing Powerful Partnerships

Our superpower has always been teamwork.

Untapped opportunities can emerge during times of crisis, and we're grateful for the ability to create new partnerships to increase access to food. We participated in drive-through food and diaper distributions at numerous St. Louis County Library locations several times a week starting at the end of March. The result was over one million meals distributed free of charge to children ages 18 and younger.



Our Volunteers

"I like volunteering in the warehouse, helping OFS and talking to the staff. I also enjoy seeing the pantries coming to pick up food...and getting a good workout!"

—Martha Kratzer

Before the pandemic restricted in-person activities, our dedicated and passionate volunteers helped us sort food, pack family meal kits and prepare backpacks for distribution. When restrictions were lifted, OFS utilized temporary staff to complete the work of our volunteers.

2,188 volunteers
spent **11,669** hours,
saving OFS **\$317,396**
during the fiscal year.

Volunteer Groups Are Critical to Our Mission

AAA Club of Missouri

American Water

ASCE Young Professionals

Ascension Health

Bank of America

Bar Association of
Metropolitan St. Louis

Bayer

Brentwood Services
Administrators, Inc.

Bryan Cave Leighton
Paisner LLC

Continental Title

Cortex

Crown Castle

Dent Wizard

Dierbergs Markets

Dr. Aaron Wahl's Network
Group

Enterprise Holdings

Express Scripts

Federal Reserve Bank of St. Louis

GadellNet

GiftAMeal

Girl Scouts of Eastern Missouri

Great Southern Bank

Heise Advisory Group

Holy Redeemer Catholic School

Immaculate Conception School

Ladue Horton Watkins
High School

Logan University

Lumeris

Mercy Hospital St. Louis

Midas Hospitality

Missouri Bar Association

Musick Construction

New City School

PNC

Protiviti

Rabo AgriFinance

Rafco Properties

The Resource Group

RGA

Rossman School

Saint Louis Science Center

Schnuck Markets

SSM Health

Taylor Midwest

Veterans Care Coordination

Wells Fargo

World Wide Technology

XFL St. Louis BattleHawks

Our Partners

“We have been working with a number of pantries and organizations to get food into the community during the pandemic. OFS has been crucial to our efforts. They have provided critical supplies for our community donations and have been flexible when things have changed due to weather or transportation issues. They’ve been a superior partner during this difficult and challenging time.”

—Beth Boggs, founder, Step It Up, Inc.

Dedicated Partners Empower Our Work

Area Resources for Community and Human Services (ARCHS)

Beyond Housing

Boggs, Avellino, Lach & Boggs, LLC

Catholic Charities of St. Louis

The Center for Youth on the Rise

DeSales Community Housing Corporation

Eat Here St. Louis

First Things First Foundation

Florissant Assembly of God

Girl Scouts of Eastern Missouri

Home State Health

International Institute

Liberty Orchard Farm

The Little Bit Foundation

Missouri Care

Missouri Coalition for the Environment

National Association for the Advancement of Colored People

No Kid Hungry

The PHASE Program Community Advisory Group at Danis Pediatrics Cardinal Glennon Hospital in partnership with Saint Louis University College of Public Health and Social Justice and Saint Louis University Medical School

Ready Readers

Regional Response Team

Saint Louis University Community Urban Farm

Seeds of Hope Farm

Share Our Strength

Share the Harvest

Social Policy Institute at Washington University in St. Louis

Springboard to Learning

SSM Health DePaul Hospital OB Care Center

St. Charles City-County Library

St. Louis Children’s Hospital

St. Louis County Library

St. Louis Housing Authority

St. Louis Public Library

Three Rivers Community Farm

United HealthCare Services, Inc.

University of Missouri Extension

Urban League of Metropolitan St. Louis

Urban Strategies

Our Mission: **How to Help**

"I have been on summer break for 160 days and have had food on the table without having to wonder if it'll be my last. I want to help other people be able to say the same."

—Paige Rubin, student



Donate

As responsible stewards of your generosity, we make every dollar count! Your donation provides food, nutrition education, training and technical assistance to stem the tide of childhood hunger and family food insecurity.

Donate.[OperationFoodSearch.org](https://www.operationfoodsearch.org)



Volunteer

Our generous, dedicated volunteers are the backbone of our organization. It takes many helping hands to feed nearly 200,000 people every month. Contributed hours saved OFS \$317,000 during the fiscal year, helping us maintain free programs and services for our clients.

Volunteer.[OperationFoodSearch.org](https://www.operationfoodsearch.org)



Give Food

Food donated by individuals, groups and organizations is crucial to our efforts to heal hunger. You make a difference! In the 2020 fiscal year, more than \$1 million of food was collected from community-driven food and fund drives! **Food.**[OperationFoodSearch.org](https://www.operationfoodsearch.org)



Spread the Word

You have the power to help end hunger! Lend your voice in support of our neighbors in need by becoming an OFS advocate.

Follow.[OperationFoodSearch.org](https://www.operationfoodsearch.org)

 /OpFoodSearch

 /OPFoodSearch

 /OPFoodSearch

 @OPFoodSearch

Our Year in Photos

Eat Like a King, Judged by a Cub

Before the pandemic, OFS hosted a panel of kid judges from COCA. They tasted creations by local celebrity chefs Katie Lee Collier, Qui Tran, Loryn Nalic and Rick Lewis to choose their favorite for the new Lion's Choice kids meal. A portion of sales of the meal benefited OFS.



Warners' Warm-Up

Friends Board Vice Chair Alejandra Berra walked the runway with her daughters to raise awareness for the 20th Warners' Warm-Up coat drive in October 2019.



Swing to Heal Hunger

Our annual Swing to Heal Hunger golf tournament in October 2019 raised more than \$71,000 to support our mission. Pictured from left to right are OFS Board Chair Lisa Pelikan, Rick Bazan, OFS Board member Rick Stevens, Perry Hartwick, Doug Krause and OFS Executive Director Kristen Wild.



Shop Out Hunger

Friends Board member Tess Coyman and volunteer Shawn Kendrick collected donations at our 10th-annual region-wide food drive.



Cash Is King

The marketing team from 105.7 The Point posed with OFS Director of Community Relations Judy Coyman, celebrating the success of their food and fund drive in 2019.



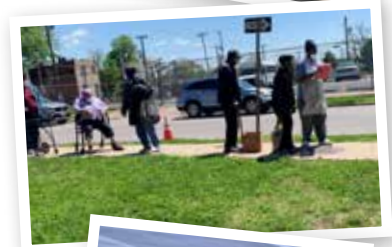
Invaluable Helpful Partnerships

OFS Food Donations Relationship Manager Jack Baran got help from the National Guard during a drive-through food distribution.



Safety Protocols

Many of our Community Food Partner Agencies saw an increase in demand after COVID-19 hit. In this photo, clients wait for food outside Labor of Love Ministries on Tower Grove Avenue in St. Louis.



Food and Fun Club

Our Summer Meals Program was modified due to the pandemic to allow for social distancing and walk-up service.



All Hands on Deck

When COVID-19 made it unsafe to welcome guests to the facility, OFS staff did double duty packing boxes normally handled by volunteers.



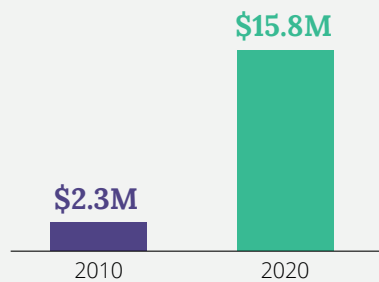
Our Financials

Statement of Financial Position

TEN-YEAR GROWTH

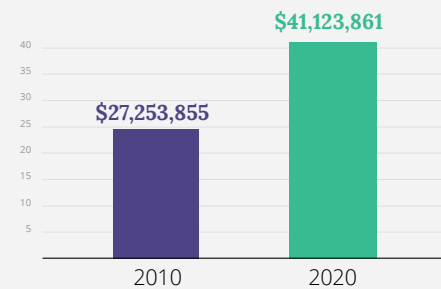
Total Assets

Nearly **7 times** larger in 10 years.



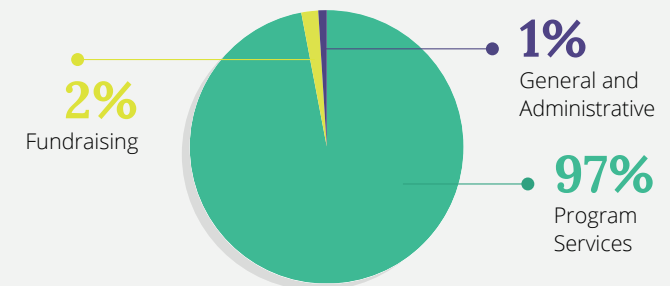
Total Revenue

Increased by **51%** in 10 years



FISCAL YEAR 2020

Expense Allocation



ASSETS

Current assets:

	2020
Cash and cash equivalents	\$ 1,922,538
Investments	2,625,121
Receivables and promises to give	814,481
Inventory	1,639,591
Prepaid expenses	24,081

Total current assets **7,025,812**

Property and equipment, net of accumulated depreciation	5,192,323
Unconditional promises to give, net of discounts	29,023
Grants receivable, net of discounts	299,245
Endowment	3,275,801

Total assets **\$ 15,822,204**

LIABILITIES AND NET ASSETS

Current liabilities:

	2020
Accrued expenses	\$ 445,000

Net assets:

Without donor restrictions	12,240,087
With donor restrictions	3,137,117
Total net assets	15,377,204

Total liabilities and net assets **\$ 15,822,204**

Our Financials

Statement of Activities and Changes in Net Assets

OVERVIEW

	2020		
	Without Donor Restrictions	With Donor Restrictions	Total
Support and other revenue:			
Support:			
Cash and investment contributions	\$ 5,667,610	\$ 671,841	\$ 6,339,451
State support	2,115,559	-	2,115,559
Grant revenue	3,292,549	421,546	3,714,095
Special events (net after \$32,580 of expenses)	99,603	-	99,603
Subtotal	11,175,321	1,093,387	12,268,708
Other non-cash contributions	28,589,552	-	28,589,552
Total support	39,764,873	1,093,387	40,858,260
Other revenue (loss):			
Rental income	114,284	38,083	152,367
Other income	81,505	-	81,505
Investment income	31,729	-	31,729
Total support and other revenue	\$ 39,992,391	\$ 1,131,470	\$ 41,123,861
Net assets released from restrictions	591,479	(591,479)	-
Functional expenses:			
Program services	34,965,851	-	34,965,851
Management and general	314,290	-	314,290
Fundraising	779,052	-	779,052
Total functional expenses	36,059,193	-	36,059,193
Changes in net assets	(4,524,677)	539,991	5,064,668
Net assets, beginning of the year	7,715,410	2,597,126	10,312,536
Net assets, end of the year	\$ 12,240,087	\$ 3,137,117	\$ 15,377,204

On March 11, 2020, the World Health Organization declared the COVID-19 virus a worldwide pandemic as the spread of the virus had reached most countries, including the United States. Federal, state and local governments took actions to limit the transmission of this virus, which included restrictions on travel, dining and many other nonessential business and consumer activities. The impact of this virus and the government-mandated restrictions could have a significant impact on the organization's future operations. The United States federal government, as well as many state and local governments, are passing stimulus bills to combat the economic impact of the virus. The potential effectiveness of these stimulus bills is currently not known. In response to the pandemic, Operation Food Search sought out new sources for food donations; purchased additional food for the community; changed food distribution models to include more drive-through and grab-and-go options; adjusted warehouse procedures to include new safety measures; created numerous virtual and online resources for nutrition education, food access and other assistance; and partnered with additional organizations to provide leadership and support for hundreds of thousands of individuals in the bistate region. As of the date of the independent auditor's report, management could not reasonably estimate the duration and severity of the COVID-19 pandemic or the overall impact to the organization's operations. These accompanying financial statements do not include any adjustments for the risk and uncertainty of COVID-19.

Our Donors

October 2019–September 2020

In-Kind

(\$100,000 or more)

Schnucks



Straub's
FINE GROCERS

Boggs, Avellino, Lack &
Boggs, LLC / *On the Run*
by Wallis Companies

C&C Produce

Central Paper

Convoy of Hope
Dot Foods
Holten Meat
Hope and Encouragement
for Humanity
Keefe Supply
Ole Tyme Produce
Pepperidge Farm
PepsiCo
Prairie Farms Dairy
Reckitt Benckiser
Sysco
Tyson
US Foods
Volpi
Whole Foods
XPO Logistics

\$250,000–\$499,999

Bayer Fund

Community Impact Network

\$100,000–\$249,999

Anonymous (2)

Big League Impact, Inc.

Dana Brown Charitable Trust

Express Scripts Foundation

Mr. Maurice Meslans and

Ms. Margaret Holyfield

Missouri Foundation for Health

Post Holdings

\$50,000–\$99,999

Anonymous (2)

Bank of America Charitable
Foundation

Becker Iron and Metal

Cardinals Care

Dierbergs Markets, Inc.

Emerson Charitable Trust

Enterprise Holdings
Foundation

Mr. and Mrs. Allen and
Joanne Hauge

LBE Holdings, LLC, DBA Hardee's

Mr. Eugene Maier and

Ms. Catherine Ingini-Maier

MAZON

Mr. and Mrs. James and
Susan McHugh

On the Run by Wallis Companies

Pershing Charitable Trust

PNC Foundation

Herman T. and Phenie R.
Pott Foundation

Safety National Casualty Corporation

Share Our Strength

Square One Foundation

Sunnen Foundation

William A. Straub, Inc.

William S. Anheuser Charitable Fund

\$1,000,000+

St. Louis County

\$500,000–\$999,999

Estate of the Rev. Dr. Larry Neeb, founder of the Neeb Family Foundation

Our Donors

October 2019–September 2020

\$25,000–\$49,999

Ameren Missouri
 American Direct Marketing Resources
 Ascension Health
 Bunge North American Foundation
 Edward Jones
 Mr. and Mrs. Joseph and Nancy Giljum
 Insurance Industry Charitable Foundation
 Ms. Marie Jacobs
 Mr. and Mrs. Keith and Cheryl Kowalczyk
 Ms. Lynn Morley
 Norman J. Stupp Foundation
 Mr. and Mrs. Rodger and Paula Riney
 St. Louis Community Foundation
 Mr. and Mrs. Peter and Linda Werner

\$10,000–\$24,999

Anonymous (3)	Ms. Miriam Ferguson	Murphy Company Inc.
American Water Charitable Foundation	Mr. and Mrs. Terry and Pepe Finn	Newman's Own Foundation
AT&T Missouri	Mr. and Mrs. Richard and Kathy Fitzer	Mr. and Mrs. John and Anita O'Connell
Ms. Nancy Bales	Fox Family Foundation/ Sam and Marilyn Fox Foundation	Evelyn B. Olin Charitable Trust
Bar Association of Metropolitan St. Louis	Mr. and Mrs. Steve and Mary Frank	Mr. and Mrs. Ralph Pelikan Protiviti
Mr. Robert Bassett and Ms. Vicki Pohlman	Mr. William Franz	RGA Reinsurance Company
Gertrude and William A. Bernoudy Foundation	FRB Federal Credit Union	Joseph H. and Florence A. Roblee Foundation
Mr. Gerhard Blum	Gaylord Foundation	Mr. Gerald Rullkoetter
Boeing Company	GiftAMEal	Mr. Louis Russo
Boeing Employees Community Fund	Great Southern Bank	Mr. and Mrs. Don and Shirley Sher
Mr. and Mrs. Mark and Cynthia Breihan	Mr. and Mrs. Jacob and Jessica Herschend	The Sidener Foundation
Mr. and Mrs. Timothy and Sandra Burke	Mr. and Mrs. Michael Honigfort	Mr. and Mrs. Al Siteman
Mr. and Mrs. W. Lee and Kati Capps	Interco Charitable Trust	Mr. and Mrs. Hermann F. Spoehrer
Mr. and Mrs. Scott Cochran	JST Charitable Fund	St. Louis Claim Managers' Council
Mr. and Mrs. Ryan and Cynthia Cuba	Mr. and Mrs. Jeff and Mary Kalinowski	St. Louis County Library Foundation
Mr. Terry Daniels and Ms. Jeanne Speroulas	Mrs. Martha Kratzer	St. Louis Mask Project by Ladue Students
Delta Dental of Missouri	Lion's Choice	Mr. and Mrs. Pat and Jane Tracy
East Missouri Foundation	Lux Living/Whistler One LLC	Tracy Family Foundation
Eastman Foundation	MasterCard International	The Tromblee Foundation
	Millstone Foundation	United Way of Greater St. Louis
	Ms. Sharon Moran	Ms. Stephannie White

Our Donors

October 2019–September 2020

\$5,000–\$9,999

Anonymous (2)	Gipson Family Foundation	Ms. Joan Mueth	Mr. and Mrs. Neal and Linda Shapiro
ABLCLocal Independent Charities	Good Meets World	National Cart Company	Mr. and Mrs. Skip and Elaine Spielberg
Ms. Diane E. Allen	Mr. Michael Gray	Neeb Family Foundation	Mr. John D. Sprague and Ms. Carol W. Kohfeld
Anthem Blue Cross Blue Shield	Mr. and Mrs. Stephen and Rebecca Hager	No Kid Hungry Missouri	Mr. Peter Stevens and Ms. Elizabeth Kellogg
Arch Apparel	Mr. and Mrs. J. Mark Harrington	Mr. and Mrs. Dan and Lisa Pelikan	St. Louis-Jefferson Solid Waste Management District
Mr. Bryan Bell	Mr. Mike Herring	Dr. and Mrs. James and Robin Pettijohn	Tech Electronics, Inc.
Mr. Russell Browning and Ms. Tui Kenny Leatherman	Mr. and Mrs. Peter Johnson	Ms. Georgia Pettus	TEGNA Foundation
Mr. and Mrs. Mark Bulanda	Mr. and Mrs. John and Anne Jordan	Mrs. Deloris Petty	Mr. and Mrs. Simon and Mary Tonkin
Cigna	Mary Ranken Jordan and Ettie A. Jordan Charitable Foundation	Pfizer Foundation Matching Gifts Program	Toyota Dealer Match Program
J & S Cochran	The Keeley Companies	Mrs. Ruth Powell	Trio Foundation of St. Louis
Mr. and Mrs. Anthony Corey	Mr. and Mrs. Chris and Jessica Kerckhoff	Mr. and Mrs. Jim and Mary Powers	Twain Financial Partners LLC
Mr. Charles Cuny and Ms. Virginia Vasey	Ms. Megan Keyes	Pownall Giving Fund	Ms. Connie van Fleet
Mr. and Mrs. Terry and Barb Donohue	Mr. and Mrs. Michael and Kate Kupstas	Ms. Rachel Roberts	Dr. and Mrs. Suresh and Tanya Vedantham
Mr. and Mrs. Thomas and Kimberly Elfrink	Les Dames D'Escoffier International	Mr. and Mrs. Trevor and Lindsey Rosenthal	Mr. George Weber
Drs. Alex and Carol Evers	Clemence S. Lieber Foundation	Mr. Scott Rutledge	Mr. Frederick Wiesehan
Mr. and Mrs. Fritz and M.M. Gebhard	Robert J. Lieber Charitable Trust	Saigh Foundation	WJC Family Giving Fund
Generate Health	Marian Foundation	Schnuck Markets, Inc.	Mr. Jim Wood, CFP
Mr. and Mrs. John R. and Marilyn Gibbs	Mr. James Moranville and Ms. Jane Hanebrink	Seeger Toyota	
		Drs. Clay and Janice Semenkovich	
		Mr. and Mrs. Chris and Judith Shamel	

Our Donors

October 2019–September 2020

OUR DONORS MAKE ALL OUR WORK POSSIBLE

\$2,500–\$4,999

ActBlue Charities
Ms. Allyn Albritton
Altus Properties
Anonymous
Ms. Cathy Barancik
Mr. Tony Bardol
Mr. Matt Bayer
Dr. William Becker
Mr. Brett Begemann
Dr. Debbie Bennett
Drs. Daniel Bergmann and
Debra Dill-Bergmann
Mr. and Mrs. Martin and
Carmen Blaylock
Mr. James Boarman
Mr. and Mrs. Louis and Mary Bonacorsi
Mr. and Mrs. Paul and Susan Boughton
Mr. and Mrs. Deric Brookman
Mr. and Mrs. David and Susan Burkhart
Mr. and Mrs. Phil and Judy Cagney
Mr. Lawrence Callahan
Campbell-Avery Fund
Carol House Furniture
Mr. and Mrs. Bill Carrier
Mr. Eric Christner and
Mrs. Kim Dunbar
Mr. Page Degraaff
Mr. and Mrs. Jonathan and
Jennifer Deutsch
Ms. Susan Dobmeyer
Mr. and Mrs. Michael Duchek
Mr. Adrian Duehl

Element Church Inc.
Ms. Hillary Elfenbein
Ms. Elizabeth Engelsmann
Mr. and Mrs. Chad and Bonnie Engler
Ernst & Young LLP
Mr. and Mrs. Bernard and
Marjorie Feldman
First Community Credit Union
Mr. and Mrs. David and
Kathleen Fischhoff
Frank Adam Foundation
Dr. Elizabeth Goodman
Ms. Lisa Greenberg
Mr. Neal Harwood
Mr. and Mrs. Andrew and
Anita Higginbotham
Dr. Harlan Hodges
Mr. Paul Holway
Holy Cross Lutheran Church
Ms. Mary Ann Horner
Mr. Jonah Houts
Dr. Kayci Huff-Hardy
Mr. and Mrs. Edward
and Margie Imo
Ms. Christine Jacobs
Ms. Regina Johnson
Kaplan Development
Mr. John Kennedy
Mr. and Mrs. Kevin and
Lynne Kloster
Mr. Robert Knickmeyer
Louis H. Kohler Foundation

Ladue Fifth Grade Center
Ms. Bridget Linde
Mr. Christopher Lingle
Mr. and Mrs. Paul and Connie Lombard
LoRusso's Inc.
Mama Celeste and H Fund
Mr. and Mrs. Michael and
Sandra Martinez
Mary Martha Thrift Shop
Ms. Joanna May
Mr. Kevin D. McCarthy
Mr. Jeffrey McDonnell
Ms. Linda McMillen
Mr. and Mrs. Mark Mertens
Ms. Nancy Mietzner
Mr. Edgar W. Miller
Mr. and Mrs. Roger Miller
Mr. and Mrs. Robert and Mary Morgan
Ms. Elaine Moss
Mr. and Mrs. Dennis and
Rebecca Muilenburg
Musick Construction
Mr. and Mrs. Ram Nair
Object Computing Inc.
Mr. Kenneth Obrecht
Ms. Elizabeth Ortinau
Pappy's Smokehouse
Miss Ashley Pease
Dr. and Mrs. David and Julie Pernikoff
Prairie Farms Dairy, Inc.
Ms. Emily R. Pulitzer

Quiet Village Landscaping
Mr. Paul Rancuret
Mr. and Mrs. Willis and Rosemarie Ranney
Mr. Michael Renfro
Mr. Victor Richey and Ms. Suzanne Besnia
Richman Holdings, LLC
Mr. and Ms. William Loyd
and Nancy Rogers
Mr. and Mrs. Alan and Donna Rosenberg
RubinBrown
Mrs. Sunny Schaefer-Edwards
Mr. Christopher Schimweg
Ms. Amanda Schoonmaker
Mr. Marshall Scott
Mrs. Missy Seeger
Mr. and Mrs. Eric and Nancy Seiler
Mr. and Mrs. Linden Shepard
Mr. L. David Sibley and Ms. Wandy Beatty
Mr. and Mrs. Rex and Jeanne Siquefield
Spectra Painting Company
Jennifer Stiegemeier Angel Memorial Fund
Mr. Brian Stansberry
St. Louis BWorks
Ms. Joan M. Stepzinski
Mr. Jack Straub
Ms. Dawn Stroup
Mr. and Mrs. Tim and Mary Sullivan
Mr. and Mrs. Mark and Marla Whittenburg
Ms. Heather Wood
Ms. Patricia Woodward
Mr. James D. Workman

Our Donors | \$1,000–\$2,499

October 2019–September 2020

Anonymous (3)
Mr. Kevin Abel and Ms. Carol Ponciroli
Mr. and Mrs. Richard and
Stephanie Ackerman
Ms. Tera Adams
Mr. Joe Adorjan
Mr. John Ahlquist
Alpha Entertainment Battlehawks
Ms. Amy Altholz
American Endowment Foundation
Ameristar Casino St. Charles
Mr. Brad Anderson
Mr. and Mrs. Matthew and Jill Anderson
Mr. and Mrs. William and Wendy Anderson
Mr. and Mrs. Richard Andren
Ms. Opal Andrews
Ms. Betty Angeli-Adams
Mr. Taavi Annus
Mrs. Karen Armour
Mr. Patrick Arnall
Mr. Kevin Arrow
Norman D. and Marie L. Atkins
Charitable Trust
Automatic Controls Equipment Systems, Inc.
Dr. and Mrs. Richard Baldwin
Ms. Diane Balogh
Ms. Jennifer Barnes
Mr. and Mrs. Ted and Susan Barr
Ms. Sandra Barrett
Ms. Janet Barzoff
Mr. and Mrs. Blake and Jane Bastien
Ms. Ethel Bauer
Mr. Thomas Bauer
Mr. and Mrs. Richard Becker
Mr. and Mrs. William and Kathleen Beckmann
Ms. Judy Beckwith and Mr. Justin Mauzy
Mr. and Mrs. Michael and Angela Belshe
Mr. and Mrs. John and Patricia Bender
Mr. and Mrs. Rick and Carol Bender
Mr. Michael Bergman
Ms. Karen Bergmann
Mr. Juan Bertolino
Mr. Mark Bierk and Ms. Stacey Stater
Mr. J. Paul Biesterfeldt
Dr. and Mrs. Stanley and Claire Birge
Mr. and Mrs. Brad and Anne Bishop
Mr. and Mrs. James Bliss
Mr. and Mrs. Michael Boelter
Mr. and Mrs. Jim and Sally Boggeman
Ms. Judy Boland
Mr. and Mrs. Daniel and Maureen Borkowski
Mr. and Mrs. Raymond and Dorothea Botz
Ms. Diana Bourisaw
Mrs. Laurie Bowman
Mr. and Mrs. Vance Brakefield
Mr. and Mrs. David and Andrea Braun
Mr. Michael Brave

Ms. Nancy Breier
Ms. Gina Bremehr
Mr. and Mrs. William D. & Ann M. Brenner
Ms. Eileen Bridge
Ms. Barbara Markus and Mr. Rusty Briggs
Mr. and Mrs. Anthony and Ann Brinkmann
Ms. Robert Broderick
Ms. Erin Brooks and Mr. Josh Udelhofen
Mr. Lee Broughton and Ms. Chrissy Taylor
Broughton Brand Company
Ms. Carol Brown
Mr. Clayton Brown
Mr. David Brown and Ms. Cheryl R. Green
Mr. John Brown
Drs. David and Kathleen Brunts
Bryant Christie, Inc.
Ms. Laura Bryant
Mr. and Mrs. Lee Bryant
Mr. and Mrs. Nik and Gina Brym
Mr. and Mrs. Pamela and Angelo Bufalino
Ms. Susan Burns
Mr. Stuart Bush
Mr. and Mrs. William Campbell
Mr. Steve Carani
Mr. and Mrs. Sam and Ruth Cardinale
Ms. Kathleen Carmody
Ms. Teri Carrington
Ms. Dorothy Carroll
Mr. Christopher Carson and
Ms. Deborah B. Bloom
Mr. and Mrs. Thomas and Marie Carter
Ms. Elizabeth Carver
Mr. and Mrs. Raghavan Chakraverty
Mr. and Mrs. Brett Cherry
Dr. and Mrs. Michael and Caroline Chicoine
Chod Family Foundation
Ms. Kathleen Chott
Church World Service, Inc.
CJC Transport
Mr. and Mrs. Rick Clarkson
Mr. and Mrs. Patrick and Kara Conlin
Mr. and Mrs. Peter Conrad
Continental Title Company
Mr. and Mrs. David and Jean Cowell
Mr. and Mrs. Gary and Jane Cox
Mrs. Kathryn Cox
Mr. Chad Craig
Ms. Lois Crampton
Mr. and Mrs. Michael Craven
Crestwood-Sunset Hills Rotary Club
Ms. Judy Crews
Mr. David Cronin and Ms. Harriet Switzer
Mr. John Crossett
Ms. Mackenzie Daly
Mr. and Mrs. Michael and Susan Darcy
Mr. and Mrs. Sayed and Elise Darwish
Mr. Pradip Das

Mr. and Mrs. Thomas and Barbara Daugherty
Mr. and Mrs. Bob and Heidi Davidson
DaVita
Dr. Charles Debord
Ms. Julie Decker
Mr. Jerome DeClue
DEMA Engineering Company
Mr. Dale Dendtler
Mr. and Mrs. Glenn Detrick
Mr. Jeremy Deutsch
Mr. and Mrs. Roger and Barbara Dierberg
Ms. Betty Donahoe
Ms. Evelyn Donnell
Dr. and Mrs. James and Nancy Donnell
Dr. Joan Downey
Mr. Matthew Easley
EB Foundation/AFB International
Mr. Andrew Eck
Eckert's Country Store
Mr. Mark Eggert and Ms. Julie Tang
Mr. and Mrs. Seth and Marion Eisen
Mr. and Mrs. Steve and Kathleen Eiser
ElectroSavings Credit Union
Ms. Sondra Ellis
Emmanuel Episcopal Church
Ms. Kristie Engemann
Mr. Alan Ernst
Ms. Anna Etzkorn
Mr. Ryan Eudy
Mr. Bradley Evanoff
Mr. and Mrs. John and Phyllis Evans
Mr. and Mrs. Andrew and Patricia Eversole
Mr. and Mrs. Glenn and Dianne Ewing
Farmers Insurance
Mr. and Mrs. Brian and Kristin Ryan Fauss
Mr. and Mrs. Patrick and Joanne Ferguson
Ms. Nancy Ferriss
Mr. and Mrs. William and Susan Fiala
Mr. and Mrs. Richard Fichter
Mr. Susan Fields
Mr. and Mrs. Richard and Dianna Fine
Mr. Lance Finney
Fischer-Bauer-Knirps Foundation
Mr. James Florczak and Ms. Nancy Friedland
Ms. Kathleen Flynn
Mr. Robert Forsyth
Mr. and Mrs. Thomas Fox
Mr. Chad Froelker
Ms. Nancy Fussner
Mr. and Mrs. John Gemoules
Dr. Guy Genin
Mr. Christopher Georgen
Fr. Robert Gettinger
Mr. John Giger
Mr. and Mrs. Norman Gilbert
Ms. Gina Glackin
Mrs. Lisa Goebel

Ms. Margaret Golden
Mr. Michael Goldey
Dr. and Mrs. Charles and Talia Goldfarb
Ms. Traci Goldstein
Ms. Harriet Goodman
Mrs. Lori Goodman
Mr. Abraham Gootzeit and Ms. Irene Holubec
Mr. and Mrs. Mark and Michele Gorski
Mr. and Mrs. Kenneth and Kathleen Graesser
Mr. and Mrs. Michael and Joanne Graham
Mr. and Mrs. Randall T. Graham
Ms. Sandy Gray
Greater Grace Church
Ms. Sharon Greenberg
Mr. Dan Grossman and Ms. Janet St. Onge
Ms. Rubbie Groves-Clay
Ms. Lynne Gruebbeling
Mr. and Mrs. Thomas R. Guignon
Mr. Bret Gygi
Mr. Leo Haas
Mr. and Mrs. Mark and Laura Haberberger
Mr. Dennis Hall
Mr. and Mrs. Bruce Halliday
Mr. and Mrs. Tim and Callie Halls
Mr. and Mrs. William and Lois Hamrick
Mr. and Mrs. Donald Hardin
Mr. Jeff Harris and Ms. Nancy Schuehler-Harris
Mr. Tobey Harris
Ms. Suzanne Hart
Mr. and Mrs. Steven and Elizabeth Haupt
Ms. Mary Hawker
Mr. and Mrs. David and Kathy Hawkins
Florence Heiman Charitable Trust
Mr. Terry and Judith Hein
Mr. and Mrs. Udo and Jennifer Heinze
Mr. Phil Heisner
Ms. Deanna Helfer
Mr. and Mrs. Roy Hendin
Hermann Family Foundation
Mr. and Mrs. Michael and Sallie Herzog
Dr. and Mrs. Scot and Bonnie Hickman
Mr. Tom Hicks
Mr. Richard Hierns
Mr. and Mrs. Travis and Alison Hillen
Hindu Temple Youth Group
Mr. Gary L. Hirshberg
Mr. and Mrs. William and Judith Hof
Mr. and Mrs. Kurt and Julie Hoff
Mr. and Mrs. David and Julie Hohman
Mr. Chuck Holmes
Mr. and Mrs. Jim and Shirley Holten
Mr. and Mrs. Gregory and Rosalind Hood
The Harold and Ethel Horowitz
Family Foundation
Ms. Christine Hughes
Ms. Susan Hume
Mr. and Mrs. John Hungerford

Mr. and Mrs. Leon and Carol Hunton
Ms. Mary Hurst
Mr. and Mrs. Mike and Barb Hurst
Immanuel Lutheran Church and School
Integris Ventures Management, LLC
Intoximeters
Ms. Janice Ittner
J&J Charitable Fund
Ms. Beth Jantz
Mr. and Mrs. Robert and Janice Jerden
Joanie's, Inc.
Mr. and Mrs. Dean and Cheryl Joerling
Ms. Kristin Johnson
Ms. Nanette Johnson
Mr. Robert Johnson
Ms. Carol Jonak
Ms. Cynthia Jones
Mr. and Mrs. Jerry and Deena Jones
Mr. and Mrs. Michael and Kathy Jones
Ms. Maryellen Judge
J.W. Terrill
Ms. Margaret Katranides
Mr. David Katz
Ms. Deborah Kaufman
Mrs. Nancy Keller
Ms. Mary Kelley
Kenbeck Co.
Mr. Arthur Kerckhoff
Mr. Paul Kerkemeyer
Mr. and Mrs. Hugh Kiel
Mr. and Mrs. John Kilo
Mr. David Kilper
Ms. Katharine Kilper
Ms. Pauline Kim
Mr. Brian King
Ms. June G. King
Mr. and Mrs. Joe and Dawn Kinsella
Mr. and Mrs. John Kissel
Ms. Linda Klatch
Mr. and Mrs. Jerry and Gerry Klein
Mr. and Mrs. Ward and Carol Klein
Ms. Lisa Klemper
Mr. Daniel Kloeckener
Mr. Richard Klohr
Mr. Michael Kohn
Mr. Fritz Korte
Ms. Connie Kraus
Mr. and Ms. Drew and Charli Kreienkamp
KRS Education and Rural Development
Foundation
Mr. and Mrs. Thomas Laffey
Mr. and Mrs. Howard and Bonnie Laiderman
Mr. and Mrs. Warren and Susan Lammert
Ms. Carolyn Landry
Ms. Sally Landwehr
Ms. Mary Katherine Lane
Ms. Megan Lane

Mr. Francis Laquinta
 Mr. and Mrs. John Laughlin
 Mr. and Mrs. Jack Lay
 Leadership for America
 Mr. Richard Lederich
 Mr. Timothy Lembeck
 Ms. Karen Levy
 Mr. William Lewis
 Lighting Associates, Inc.
 Mr. Pete Lilly
 Ms. Tiya Lim
 Ms. Keith and Erin Linnenbringer
 Mr. and Mrs. David and Kathleen Litschgi
 Mr. Bradley Locke
 Ms. Judith Lohaus
 Ms. Samantha Long
 Mr. and Mrs. Mike and Sheila Loyet
 Mr. and Mrs. Robert and Jenni Loynd
 LSS at Breeze Park Residents Association
 Mr. and Mrs. Frank and Helaine Mackey
 Mr. John Madey
 Mr. and Mrs. Suzanne and Mark Manelli
 Ms. Kathy Mangano
 Mr. and Mrs. Chuck and Jennifer Markwardt
 Mr. and Mrs. James Martin
 Mr. Robert Martin
 Ms. Janet Matthews
 Mr. Paul Matz and Ms. Jacqueline Saito
 Mr. Andrew Maynard
 McCarthy, Leonard and Kaemmerer
 Mr. and Mrs. Kevin and Anne McCormack
 Mr. and Mrs. Philip and Jeanne McDermott
 Mr. and Mrs. Michael McEnery
 Mrs. Stephanie McFadden
 Ms. Joan McGivney
 Ms. Lesley McIntire
 Ms. Pamela McIntyre
 Mr. and Mrs. John and Connie McPheeters
 Medtronic
 Ms. Rachel Meier
 Mr. and Mrs. William Menzel
 Mr. and Mrs. Mark Messmer
 Mr. and Mrs. Alan and Jeaninne Meyer
 Mr. Jonathan Meyer
 Mr. and Mrs. Lee and Barbara Meyer
 Mr. and Mrs. Michael and Angela Meyer
 Mr. Rich Meyers
 Mr. Milton Mill
 Mr. Jack Miller
 Mr. and Mrs. James and Elaine Miller
 Ms. Janet L. Miller
 Ms. Kathy Miller
 Ms. Mary Miller
 MilliporeSigma
 Ms. Mary Carol Millsap
 Mr. and Mrs. Thomas and Cynthia Mitchell

Mr. and Mrs. Subhash Mohan
 Mr. Mark Moll
 Mr. and Mrs. Patrick and Mary Ann Moore
 Dr. R. William Morris
 Mr. James Mosblech
 Mr. and Mrs. James and Judith Mosley
 Mr. Paul Mounts and Ms. Barbara Leitle
 Mr. and Mrs. James L Mudd
 Ms. Constance Mueller
 Mr. Jeff Mueller
 Ms. Mary Ann Mueller
 Mr. Jason Muelver and Ms. Jenny Lauth
 Mr. and Mrs. Joe and Katrin Mulligan
 Ms. Eleanor Mullin
 Mr. and Mrs. James and Nancy Murphy
 Dr. and Mrs. M. Keith Murphy
 Mr. and Mrs. Scott Musgrave
 Mr. and Mrs. Richard and Sandra Nash
 Ms. Rebecca Neil
 Dr. Gregory Nelson
 Mr. and Mrs. Timothy and Mary Ney
 Ms. Mai-Han Nguyen
 Ms. Ruth Nickerson
 Mr. and Mrs. Richard and Julianne Niemann
 Mr. and Mrs. Thomas and Chandra Niemann
 Mr. Timothy Niemann
 Mr. and Mrs. John Noce
 Nor-Vel Grading and Excavation
 Ms. Christine Northcutt
 Mr. and Mrs. Edward and Meredith O'Connor
 Mr. William O'Dowd
 Ms. Susan O'Grady
 Mr. and Mrs. Shawn and Julie Oberreiter
 Mr. and Mrs. Robert Olson
 Mr. Chuck Orban
 Mr. and Mrs. Joseph and Cheryl Orlet
 Ms. Marlene Osthoff
 Mr. and Mrs. John and Valerie Paci
 Mr. Matt Padberg
 Ms. Pam Padgett
 Mrs. Kathy Paese
 Ms. Kathryn Palacio
 Mr. Zach Pals
 Ms. Elizabeth J. Parker
 Ms. Farnell Parsons
 Mr. David Pearson
 Ms. Lucinda Perry Jones and Mr. Matt Jones
 Mr. Robert W. Peterson
 Mr. and Mrs. Jeff Pfankuch
 Ms. Jeffrey Philip
 Piacentini
 Ms. Kimberly Piant
 Dr. and Ms. Jay and Lynn Piccirillo
 Dr. and Mrs. David Piston
 Pittsburgh Pipe
 Dr. and Ms. Bo and Kathy Plurad

Ms. Ronna Pohlman
 Mrs. Mary Porbeck
 Mr. and Mrs. Edward Potter
 Prairie Political Action Committee
 Mr. Daniel Pribe
 Mr. Kip Priesmeyer
 Prufrock Foundation
 Mr. and Mrs. Jeff and Sara Purple
 Mr. and Mrs. Michael Raney
 Mr. and Mrs. Steven Range
 Mrs. Lioba Rao
 Mr. and Mrs. John and Olivia Rasp
 RC Printing Services, Inc.
 Red Hat
 Mr. Ellen Reed-Fox and Mr. Tim Fox
 Reitz & Jens, Inc.
 Mr. and Mrs. Michael and Mia Rethorn
 Mr. and Mrs. Lee and Nancy Reycraft
 Ms. Margaret Rich
 Ms. Helen Riechmann
 Robert Half International
 Mr. Ryan Robson
 Mr. and Mrs. John and Margaret Roedel
 Ms. Carol Rogers
 Mr. and Mrs. Peter and Susan Rogers
 Ms. Miranda Root
 Ms. Marian Rosen and Mr. Jon Goldberg
 Ms. Judy Rosenberger
 Mr. and Mrs. Donald and Nancy Ross
 Ms. Gretchen Ross
 Mr. Peter Rossmann
 Ms. Jacqueline Rouff
 Mr. and Mrs. Michael Ruffus
 Mr. and Mrs. Jim and Erin Runnels
 Mr. and Mrs. John and Leah Saguto
 Saint Louis University
 Mr. and Mrs. John and Betsy Samet
 Mr. and Mrs. John and Almira Sant
 Dr. Sadashiv Santosh
 Mr. Stephen Sawyer
 SBA Network Services, LLC
 Ms. Donna Scanlon
 Ms. Clare Schallert
 Ms. Kathleen Scheidecker
 Mr. David Schenberg
 Ms. Jackie Schirn
 Mr. and Mrs. Albert and Susan Schlueter
 Mr. and Mrs. Jeffrey and Sharon Schmeider
 Schmidt and Barton Family Fund
 Ms. Martha Schmitt
 Mr. Tim Schoemehl and Ms. Kelly Simon
 School Food and Nutrition
 Directors Association
 Ms. Helen Schrader
 Mr. and Mrs. Dick Schrick
 Mr. and Mrs. Alan and Judy Schultz

Mr. Michael Schulz
 Ms. Fredna Scroggins
 Mr. Dennis L. Sedlak
 Mr. and Mrs. Andy and Chelsea Seeger
 Mr. and Mrs. Stephen and Janice Seele
 Mr. Richard Seibel
 Ms. Deborah Seidel
 Mr. and Mrs. Frank and Mary Serdy
 Ms. Nikhil Shekar
 Mr. and Mrs. John Shelley
 Mr. Rory Shelton
 Ms. Susan Shender
 Mrs. Barbara Shrauner
 Side Project Brewing
 Mr. Jackson Sieber
 Mr. Eddie Sigman
 Dr. William Sippo and Extended Sippo Family
 Ms. Nancy Siteman
 Ms. Claudia Skwiot
 Mr. Gerald Smith
 Ms. Karen Smith
 Mr. Raymond Smith and Mr. Buck Smith
 Mr. and Mrs. Stanley and Laura Smith
 Ms. Agnes Sobel
 Sotel Systems
 Mr. Scott Soucek
 Spectrum Enterprise
 Mr. and Mrs. Steve and Tricia Spratt
 Ms. Mary Ann Srenco
 Mr. Michael Staenberg
 Mr. Louis Stark
 Mr. and Mrs. Robert Stearns
 Stella Franchising LLC
 Mr. Richard Stenberg
 Mr. and Mrs. Jim and Erin Stephan
 Mr. and Mrs. Patrick and Jessica Stephan
 Mr. Robert Stephan
 Mr. and Mrs. John and Betsy Stern
 Mr. and Mrs. Rick and Malette Stevens
 Mr. and Mrs. James Stokes
 Dr. Cary Stolar
 Ms. Margaret Storey
 Tammy Stratman Brown Charities
 Ms. Karen Strobach
 Ms. Margaret Sullivan
 Dr. and Mrs. Walton and Carla Sumner
 Mrs. Carol Swaney
 Mr. Patrick Sweeney
 Mr. James Tabor
 Mr. Melvin Tann and Dr. Jacqueline Turner
 TD Ameritrade
 Ms. Lynn Thackrey
 Ms. Irene Thalden
 Mr. Jerome Thomasson
 Mr. Chris Thompson
 Mr. Robert Thomure
 Mr. and Mrs. George Timpe

Mr. and Mrs. Kevin and Megan Toomey
 Mr. and Mrs. Josh and Marlena Toso
 Mr. and Mrs. J. Towle
 Ms. Pam Trader
 Triumph Pharmaceuticals, Inc.
 Truck Centers, Inc.
 Dr. Sharon Tucker and Mr. Eric P. Marquardt
 Dr. Devora Tulcensky
 Mr. and Mrs. Thomas Tupper
 Union Avenue Christian Church
 US Bank
 Mr. John C. Vatterott
 Viasat
 Mr. and Mrs. David and Ann VonAllmen
 Mr. and Mrs. Gary and Tina VonderHaar
 Ms. Amy Wachs and Mr. Tim Schedl
 Mr. and Mrs. Ian and Beverly Wahl
 Ms. Cynthia Walker
 Ms. Kathy D. Walker
 Mr. and Mrs. Steven and Melissa Wallach
 Mr. Randall R. Wang
 Mr. and Mrs. Gerald and Jaculin Wankum
 Mr. Scot Ward
 Ms. Jeannie Washam
 Mr. and Mrs. Thomas and Holly Washeck
 Mr. Adrien Webb
 Mrs. Phyllis Weber
 Ms. Allison Whalley
 Ms. Penny J. White
 Mr. and Mrs. S. William and Marcia Whitson
 Ms. Deborah Wiese
 Mr. Deryck Jeremy Williams
 Mr. and Mrs. Robert Williams
 Mr. Larry Willick and Ms. Lori Goldman
 Mr. and Mrs. Luther and Carolyn Willmore
 Mr. James M. Willock and Rev. Barbara G. Willock
 Ms. Teresa Wilmes
 Mr. Vernon Wilmes
 Mr. and Mrs. Robert and Joyce Winkler
 Mr. and Mrs. Thomas and Karen Witmer-Gow
 Ms. Melissa Wohlwend
 Mr. and Mrs. Janelle Wohrley
 Ms. Nancy Wojcicki
 Ms. Patricia Wolf
 Wong Family Foundation
 Mr. Brad Wright and Mr. Eric Fely
 Ms. Sharon Yoder
 R.A. and V.C. Young
 Youthbridge Community Foundation
 Mr. and Mrs. Sun Yuen
 Mr. and Mrs. Stephan Zemann
 Mr. and Mrs. Lyle E Ziemann
 Mr. and Mrs. Lon Zimmerman
 Dr. Jeffrey Zuke
 Zurich American Insurance Company
 Ms. Susan Zweifel

Established in 2018 in honor of former Executive Director Sunny Schaefer, this fund supports OFS's sustainability for years to come.

\$500,000+

Crawford Taylor Foundation
Enterprise Holdings Foundation
Estate of the Rev. Dr. Larry Neeb,
founder of the Neeb Family Foundation*

\$250,000–\$499,999

Anonymous*

\$100,000–\$249,999

Anonymous*
Mr. and Mrs. Terry and Barb Donohue*
Mrs. Mary Jackson*
Ms. Lynn Morley

\$50,000–\$99,999

Mr. and Mrs. Allen and Joanne Hauge
Interco Charitable Trust
Mrs. Jeanne McCormack*

\$25,000–\$49,999

Sunnen Foundation

\$10,000–\$24,999

Mr. Robert Bassett and Ms. Vicki Pohlman
Ms. Erin Brooks & Mr. Josh Udelhofen
Mr. and Mrs. Ryan & Cynthia Cuba
Educational Multimedia Inc.
Mr. James F. Goebel Jr.
Mr. and Mrs. Keith and Cheryl Kowalczyk
Clemence Lieber Foundation
Mr. and Mrs. Dan & Lisa Pelikan
Mr. and Mrs. Alan and Judy Schultz

\$1,000–\$9,999

Ms. Amy Peck Abraham
Commerce Bancshares Foundation
Ms. Ann K. French
Robert J. Lieber Charitable Trust
Mr. and Mrs. Joseph and Robin McClanathan
Mr. Michael Renfro
Barbara Shrauner
Mr. and Mrs. Skip and Elaine Spielberg
St. Louis Community Foundation



*The Heirloom Legacy Society was created to recognize donors who have included OFS in their estate plans through a bequest, trust or other means. If you have included OFS in your estate plans or would like more information about doing so, please contact Ellen Reed-Fox, Director of Development, at 314-451-1950 or ellen.reedfox@operationfoodsearch.org.

Our Donors | Food and Fund Drives

OUR DONORS MAKE ALL OUR WORK POSSIBLE

Food and Fund Drives brought in more than \$1 million in food and donations during the fiscal year that ended September 31, 2020.

Leadership Food Drives*

105.7 The Point
American Optometric Association
Anheuser-Busch/Global Supply Division
Catholic Health Association
Cisco
Community School
Edward Jones
Enterprise Holdings
Good Shepherd Lutheran Church
Insight Global
Kennard Classical Junior Academy
Ladue School District
Fill the Barrel
Spectrum/Charter Communications
St. Charles County Ambulance District
Fill the Ambulance
St. Louis County Library

Leadership Fund Drives**

105.7 The Point
Aetna
All Ivy STL Alumni
Arch Apparel
Bar Association of Metropolitan St. Louis
Bayer
Bryan Cave Leighton Paisner LLC
Entercom Radio
Federal Reserve Bank of St. Louis
Hardee's/The Dave Glover Show
FM NewsTalk 97.1
Plancorp
RGA
St. Charles County Ambulance District
St. Louis BWorks—Cranksgiving
Washington University School of Law



*More than 4,000 lbs. of food donated

**More than \$5,000 donated

Thank you for supporting us in our vision to
#HealHungerSTL

OperationFoodSearch.org

1644 Lotsie Boulevard, St. Louis, MO 63132

(314) 726-5355